

BOULDER POINT



Boulder Point

- ⦿ 110 - Lot Single Family Planned Unit Development
- ⦿ Project Includes:
 - 21 - Walk-up Basement Lots
 - 32 - Premium Valley View Rim Lots
 - 57 – Flat Pad and Walk-out Basement Lots
- ⦿ Amenities Include:
 - Unrivalled Valley Views, Mountain View and Table Rock Views
 - Adjacent to Miles of Ridge to Rivers Trail System
 - Community Pool
- ⦿ Site Video & SkyView Lot Perspectives:
 - <https://vimeo.com/356276143>
 - <http://www.homesbyepic.com/skyview/BoulderHeights.html>

COMMUNITY POOL



Location

- ⦿ East Boise is Historically the Strongest Market in the Valley
- ⦿ Terraced Property with Breathtaking Views Product
- ⦿ Easy Access to Downtown, Airport, I-84 and the Mountains
- ⦿ Desire for Active Lifestyle Living
 - Ridge to River Hiking Trails
 - Table Rock
 - Lucky Peak
 - Greenbelt
 - New 126k sq. ft. Albertsons & Retail
 - Harris Ranch and Bown Crossing Restaurants, Shopping, Etc.

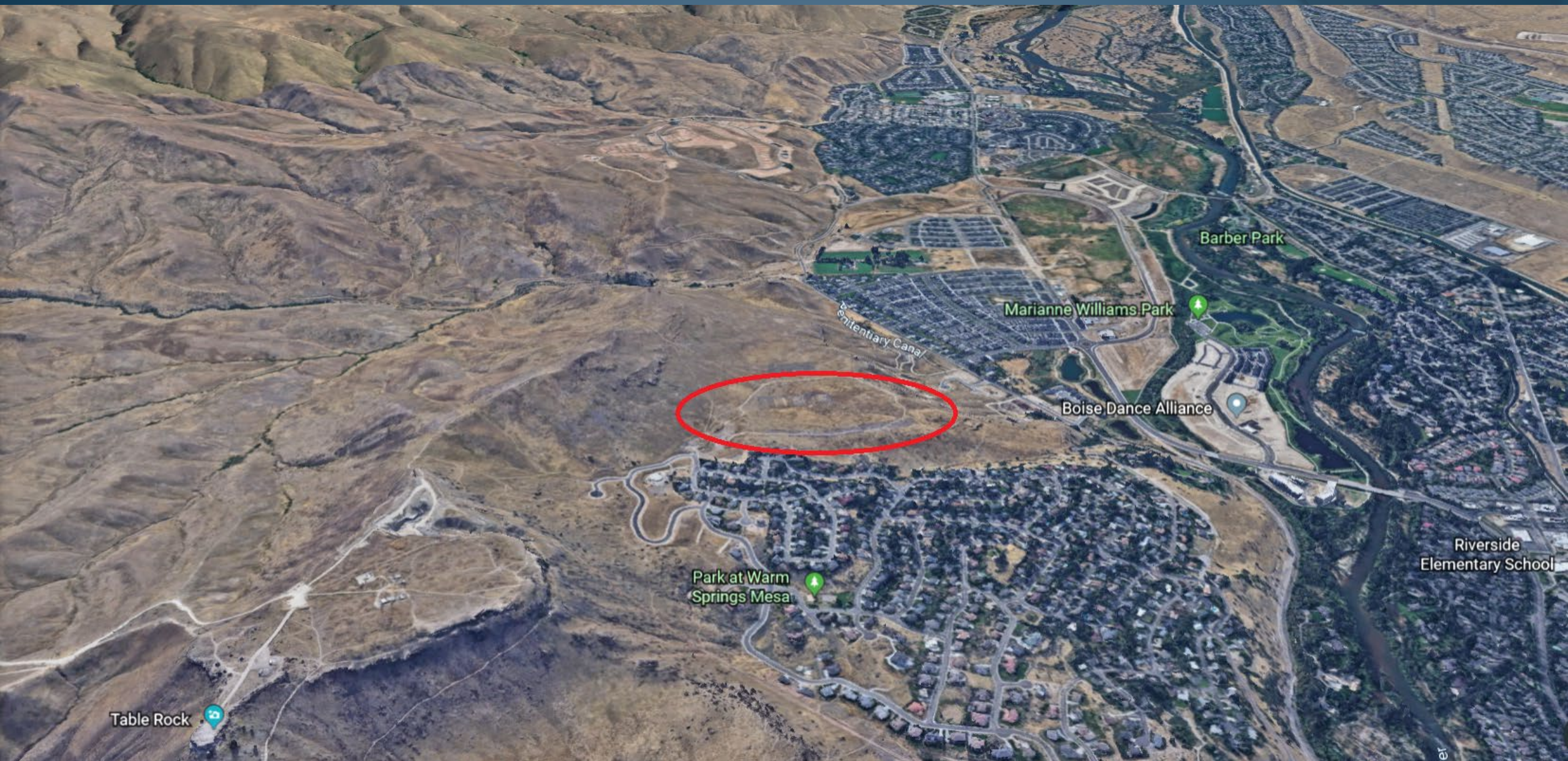


Table Rock

Park at Warm Springs Mesa

Marianne Williams Park

Boise Dance Alliance

Barber Park

Riverside Elementary School

Centenary Canal